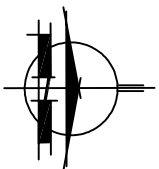
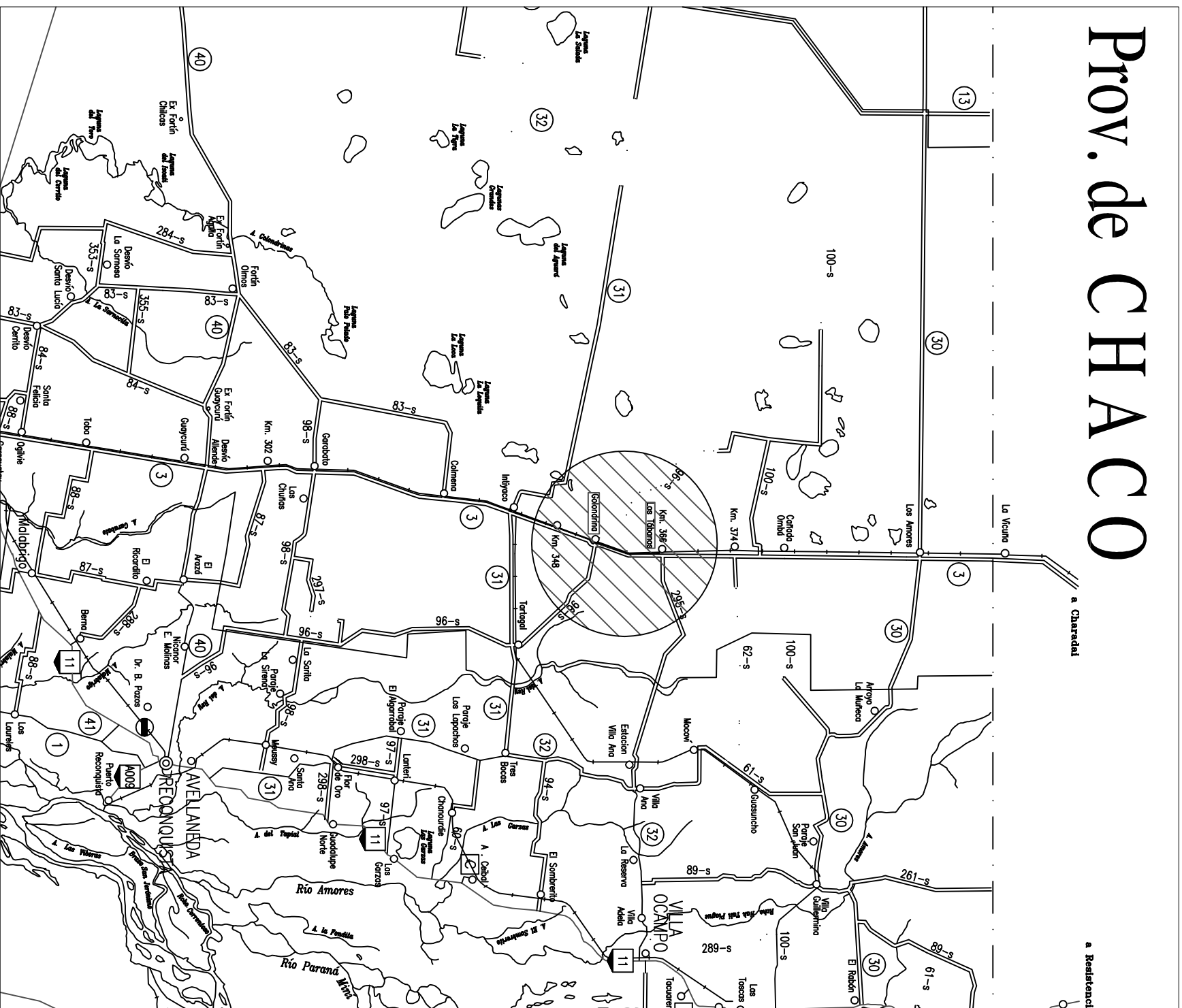


PROVINCIA DE SANTA FE
DEPARTAMENTO VERA



Prov. de CHACCO



PROVINCIA DE SANTA FE
DIRECCION PROVINCIAL DE VIALIDAD
DIRECCION GENERAL DE PROYECTOS

OBRA: RUTA PROVINCIAL N°3
TRAMO: INTIYACO — PARALELO 28°
(Límite Prov. de CHACCO)
SECCION: GOLONDRINAS - LOS TABANOS

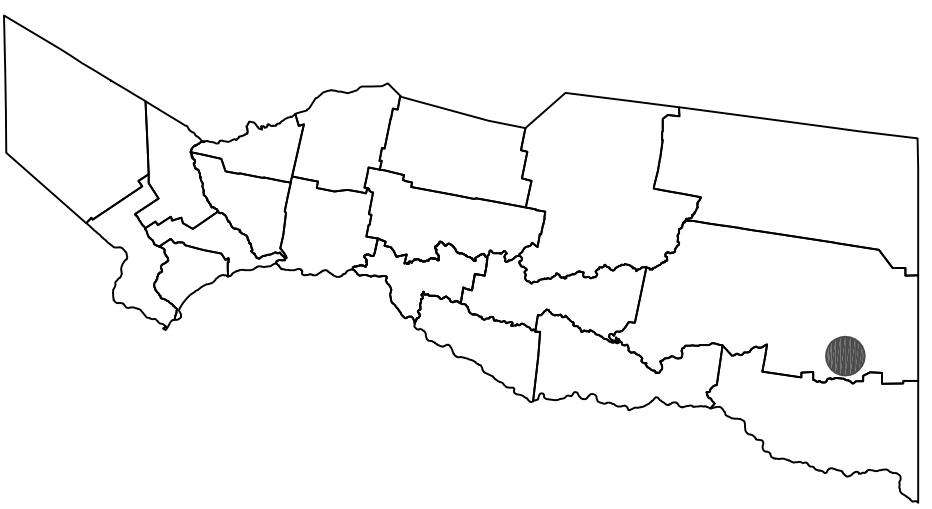
FECHA: DIRECTOR GRAL.
SEPTIEMBRE / 2013 - ACT. JUNIO 2016 Ing. OSVALDO CONTURSI

PLANO N°
9837
ESCALA:
1:25000

PROYECTISTA:
Ing. J.D. CREMONA PARRA
PROYECTISTA HIDRAULICO
Ing. CARLOS CIAN
DIBUJANTE:
Reliev. planim. MMO MUGA D.
Reliev. altim. J.L.MENDICINO

CROQUIS DE UBICACION

- REFERENCIAS**
- 12 RUTAS NACIONALES
 - 1 RUTAS PROVINCIALES
 - LÍMITE INTERPROVINCIAL
 - LÍMITE DEPARTAMENTAL





PROVINCIA DE SANTA FE
DIRECCION PROVINCIAL DE VIALIDAD
DIRECCION GENERAL DE PROYECTOS

PLANO N° **9838**

ESCALA: 1:25000

PROYECTISTA:

Ing. J.D. CREMONA PARRIA

PROYECTISTA HIDRAULICO

Ing. CARLOS CIAN

DIBUJANTE:

Relev.planim. MMO MUGA D.
Relev.altim. J.L.MENDICINO

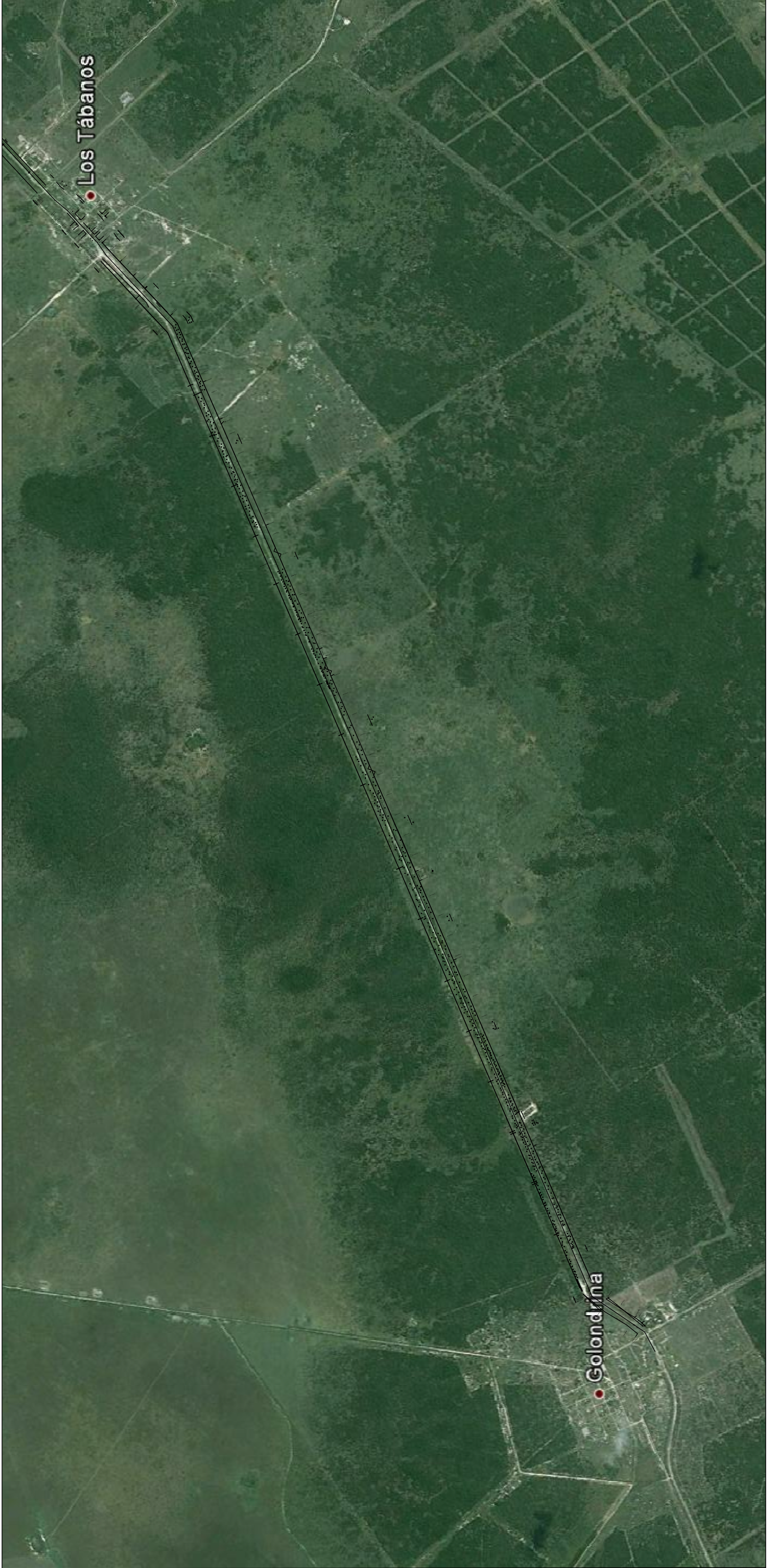
OBRA: RUTA PROVINCIAL N°3

TRAMO: INTIYACO — PARALELO 28°
(Limite Prov. de CHACO)

SECCION: GOLONDRINAS - LOS TABANOS

FECHA: DIRECTOR GRAL:

SEPTIEMBRE / 2013 - ACT. JUNIO 2016 Ing. OSVALDO CONTURSI

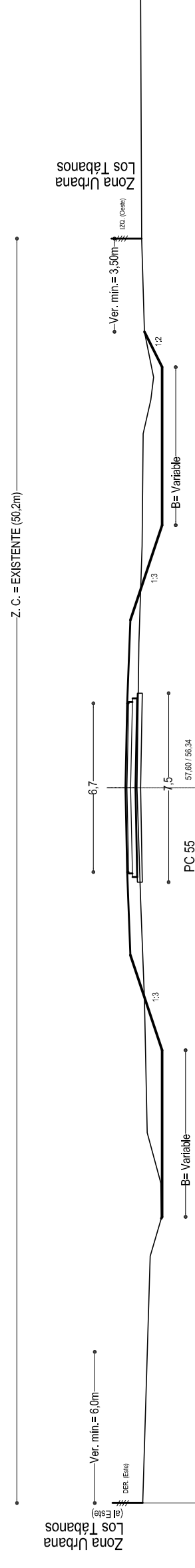


PLANIMETRÍA GENERAL

PERFIL TIPO URBANO

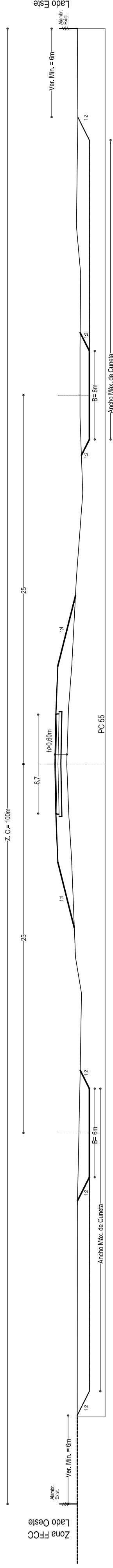
A APLICAR ENTRE PROGRESIVAS 56+900 Y 57+700

NOTA:
LAS PROGRESIVAS INDICADAS SON APROXIMADAS



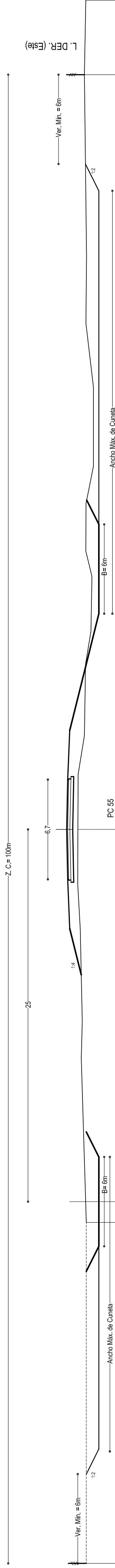
PERFIL TIPO 1

A APLICAR ENTRE PROGRESIVAS 00+000 Y 51+400
A APLICAR ENTRE PROGRESIVAS 54+400 Y 56+900



PERFIL TIPO 2

A APLICAR ENTRE PROGRESIVAS 51+400 Y 54+400




PROVINCIA DE SANTA FE
DIRECCION PROVINCIAL DE VIALIDAD
DIRECCION GENERAL DE PROYECTOS

PLANO N°	9840
ESCALA:	1:200
PROYECTISTA:	Ing. J.D. CREMONA PARMA PROYECTISTA HIDRAULICO
DIBUJANTE:	Ing. CARLOS CIAN
FECHA:	SEPTIEMBRE /2013 - ACT. JUNIO 2016
DIRECTOR GRAL:	Ing. OSVALDO CONTURSI
OBRA:	RUTA PROVINCIAL N°3
TRAMO:	INTIYACO — PARALELO 28° (Límite Prov. de CHACO)
SECCION:	GOLONDRINAS - LOS TABANOS

PERFILES TRANSVERSALES TIPO

REFERENCIA NUMERICA	
1	Alimentación nueva a construír. P.T. N° 2584.447.284.1. Total hitos: 3000m.
2	
3	Alimentación existente a conservar y limpiar.
4	Alimentación existente a demoler y reemplazar.
5	Alimentación a construir de nuevo. P.T. N° 2584.447.284.1. Total hitos: 3000m.
6	Alimentación a construir de nuevo. P.T. N° 2584.447.284.1. Total hitos: 3000m.
7	Alimentación a construir de nuevo. P.T. N° 2584.447.284.1. Total hitos: 3000m.
8	Alimentación a construir de nuevo. P.T. N° 2584.447.284.1. Total hitos: 3000m.


PROVINCIA DE SANTA FE
DIRECCION PROVINCIAL DE VIALIDAD
 DIRECCION GENERAL DE PROYECTOS

OBRA: RUTA PROVINCIAL N°3
TRAMO: INTIYACO — PARALELO 28°
 (Limite Prov. de CHACO)

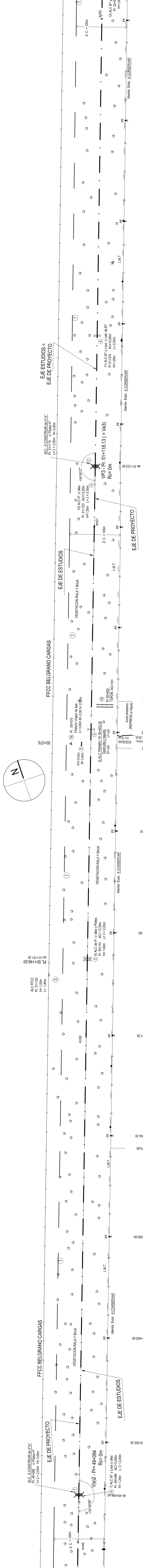
SECCION: GOLONDRINAS - LOS TABANOS

FECHA: DIRECTOR GRAL: ING. OSVALDO CONTURSI
 SETIEMBRE / 2013 - ACT. JUNIO 2016

PROYECTISTA:
 ING. J.B. GEMONA PARRA
 PROYECTISTA HABILITADO
 ING. CARLOS CHAN
 CUBIQUANTE

REVISOR: ING. M.C. MUGLIARDI
 REVISOR HABILITADO

PLANIALTIMETRIA KM(49) KM(52)



PROYECTO	DATOS DE ESTUDIO		TIPOLOGIA ALTIMETRICA	
50.075	50.080	50.085	50.090	50.095
50.090	50.095	50.100	50.105	50.110
50.115	50.120	50.125	50.130	50.135
50.140	50.145	50.150	50.155	50.160
50.170	50.175	50.180	50.185	50.190
50.200	50.205	50.210	50.215	50.220
50.230	50.235	50.240	50.245	50.250
50.270	50.275	50.280	50.285	50.290
50.300	50.305	50.310	50.315	50.320
50.320	50.325	50.330	50.335	50.340
50.350	50.355	50.360	50.365	50.370
50.380	50.385	50.390	50.395	50.400
50.410	50.415	50.420	50.425	50.430
50.450	50.455	50.460	50.465	50.470
50.480	50.485	50.490	50.495	50.500
50.510	50.515	50.520	50.525	50.530
50.540	50.545	50.550	50.555	50.560
50.580	50.585	50.590	50.595	50.600
50.610	50.615	50.620	50.625	50.630
50.640	50.645	50.650	50.655	50.660
50.670	50.675	50.680	50.685	50.690
50.710	50.715	50.720	50.725	50.730
50.740	50.745	50.750	50.755	50.760
50.770	50.775	50.780	50.785	50.790
50.800	50.805	50.810	50.815	50.820
50.830	50.835	50.840	50.845	50.850
50.860	50.865	50.870	50.875	50.880
50.900	50.905	50.910	50.915	50.920
50.930	50.935	50.940	50.945	50.950
50.970	50.975	50.980	50.985	50.990
51.000	51.005	51.010	51.015	51.020
51.030	51.035	51.040	51.045	51.050
51.060	51.065	51.070	51.075	51.080
51.090	51.095	51.100	51.105	51.110
51.120	51.125	51.130	51.135	51.140
51.150	51.155	51.160	51.165	51.170
51.180	51.185	51.190	51.195	51.200
51.210	51.215	51.220	51.225	51.230
51.240	51.245	51.250	51.255	51.260
51.270	51.275	51.280	51.285	51.290
51.300	51.305	51.310	51.315	51.320
51.330	51.335	51.340	51.345	51.350
51.360	51.365	51.370	51.375	51.380
51.390	51.395	51.400	51.405	51.410
51.420	51.425	51.430	51.435	51.440
51.450	51.455	51.460	51.465	51.470
51.480	51.485	51.490	51.495	51.500
51.510	51.515	51.520	51.525	51.530
51.540	51.545	51.550	51.555	51.560
51.570	51.575	51.580	51.585	51.590
51.600	51.605	51.610	51.615	51.620
51.630	51.635	51.640	51.645	51.650
51.660	51.665	51.670	51.675	51.680
51.690	51.695	51.700	51.705	51.710
51.720	51.725	51.730	51.735	51.740
51.750	51.755	51.760	51.765	51.770
51.780	51.785	51.790	51.795	51.800
51.810	51.815	51.820	51.825	51.830
51.840	51.845	51.850	51.855	51.860
51.870	51.875	51.880	51.885	51.890
51.900	51.905	51.910	51.915	51.920
51.930	51.935	51.940	51.945	51.950
51.960	51.965	51.970	51.975	51.980
51.990	51.995	52.000	52.005	52.010
52.020	52.025	52.030	52.035	52.040
52.060	52.065	52.070	52.075	52.080
52.090	52.095	52.100	52.105	52.110
52.120	52.125	52.130	52.135	52.140
52.150	52.155	52.160	52.165	52.170
52.180	52.185	52.190	52.195	52.200
52.210	52.215	52.220	52.225	52.230
52.240	52.245	52.250	52.255	52.260
52.270	52.275	52.280	52.285	52.290
52.300	52.305	52.310	52.315	52.320
52.330	52.335	52.340	52.345	52.350
52.360	52.365	52.370	52.375	52.380
52.390	52.395	52.400	52.405	52.410
52.420	52.425	52.430	52.435	52.440
52.450	52.455	52.460	52.465	52.470
52.480	52.485	52.490	52.495	52.500
52.510	52.515	52.520	52.525	52.530
52.540	52.545	52.550	52.555	52.560
52.570	52.575	52.580	52.585	52.590
52.600	52.605	52.610	52.615	52.620
52.630	52.635	52.640	52.645	52.650
52.660	52.665	52.670	52.675	52.680
52.690	52.695	52.700	52.705	52.710
52.720	52.725	52.730	52.735	52.740
52.750	52.755	52.760	52.765	52.770
52.780	52.785	52.790	52.795	52.800
52.810	52.815	52.820	52.825	52.830
52.840	52.845	52.850	52.855	52.860
52.870	52.875	52.880	52.885	52.890
52.900	52.905	52.910	52.915	52.920
52.930	52.935	52.940	52.945	52.950
52.960	52.965	52.970	52.975	52.980
52.990	52.995	53.000	53.005	53.010
53.020	53.025	53.030	53.035	53.040
53.060	53.065	53.070	53.075	53.080
53.090	53.095	53.100	53.105	53.110
53.120	53.125	53.130	53.135	53.140
53.150	53.155	53.160	53.165	53.170
53.180	53.185	53.190	53.195	53.200
53.210	53.215	53.220	53.225	53.230
53.240	53.245	53.250	53.255	53.260
53.270	53.275	53.280	53.285	53.290
53.300	53.305	53.310	53.315	53.320
53.330	53.335	53.340	53.345	53.350
53.360	53.365	53.370	53.375	53.380
53.390	53.395	53.400	53.405	53.410
53.420	53.425	53.430	53.435	53.440
53.450	53.455	53.460	53.465	53.470
53.480	53.485	53.490	53.495	53.500
53.510	53.515	53.520	53.525	53.530
53.540	53.545	53.550	53.555	53.560
53.570	53.575	53.580	53.585	53.590
53.600	53.605	53.610	53.615	53.620
53.630	53.635	53.640	53.645	53.650
53.660	53.665	53.670	53.675	53.680
53.690	53.695	53.700	53.705	53.710
53.720	53.725	53.730	53.735	53.740
53.750	53.755	53.760	53.765	53.770
53.780	53.785	53.790	53.795	53.800
53.810	53.815	53.820	53.825	53.830
53.840	53.845	53.850	53.855	53.860
53.870	53.875	53.880	53.885	53.890
53.900	53.905	53.910	53.915	53.920
53.930	53.935	53.940	53.945	53.950
53.960	53.965	53.970	53.975	53.980
53.990	53.995	54.000	54.005	54.010
54.020	54.025	54.030	54.035	54.040
54.060	54.065	54.070	54.075	54.080
54.090	54.095	54.100	54.105	54.110
54.120	54.125	54.130	54.135	54.140
54.150	54.155	54.160	54.165	54.170
54.180	54.185	54.190	54.195	54.200
54.210	54.215	54.220	54.225	54.230
54.240	54.245	54.250	54.255	54.260
54.270	54.275	54.280	54.285	54.290
54.300	54.305	54.310	54.315	54.320
54.330	54.335	54.340	54.345	54.350
54.360	54.365	54.370	54.375	54.380
54.390	54.395	54.400	54.405	54.410
54.420	54.425	54.430	54.435	54.440
54.450	54.455	54.460	54.465	54.470
54.480	54.485	54.490	54.495	54.500
54.510	54.515	54.520	54.525	54.530
54.540	54.545	54.550	54.555	54.560
54.570	54.575	54.580	54.585	54.590
54.600	54.605	54.610	54.615	54.620
54.630	54.635	54.640	54.645	54.650
54.660	54.665	54.670	54.675	54.680
54.690	54.695	54.700	54.705	54.710
54.720	54.725	54.730	54.735	54.740
54.750	54.755	54.760	54.765	54.770
54.780	54.785	54.790	54.795	54.800
54.810	54.815	54.820	54.825	54.830
54.840	54.845	54.850	54.855	54.860
54.870	54.875	54.880	54.885	54.890
54.900	54.905	54.910	54.915	54.920
54.930	54.935	54.940	54.945	54.950
54.960	54.965	54.970	54.975	54.980
54.990	54.995	55.000	55.005	55.010
55.020	55.025	55.030	55.035	55.040
55.060	55.065	55.070	55.075	55.080
55.090	55.095	55.100	55.105	55.110
55.120	55.125	55.130	55.135	55.140
55.150				

REFERENCIA NUMERICA	
1	Alimentación nueva a contar de P.T. N° 2284 y P.T. 2281 a 2282 (Cota 13.00m)
2	
3	
4	Acordada a estudiar y definir
5	Acordada a contar de cota de P.T. N° 1301 a P.T. N° 1300 con Cota de P.T. N° 1418 (Cota 13.00m)
6	Acordada a contar de P.T. N° 1301 a P.T. N° 1300 con Cota de P.T. N° 1418 (Cota 13.00m)
7	Acordada a contar de P.T. N° 1301 a P.T. N° 1300 con Cota de P.T. N° 1418 (Cota 13.00m)
8	Acordada a contar de P.T. N° 1301 a P.T. N° 1300 con Cota de P.T. N° 1418 (Cota 13.00m)

PROVINCIA DE SANTA FE
DIRECCION PROVINCIAL DE VIALIDAD
 DIRECCION GENERAL DE PROYECTOS

PROYECTO
9841/2

OBRA: RUTA PROVINCIAL N° 3
TRAMO: INTYACO — PARALELO 28°
 (Limite Prov. de CHACO)

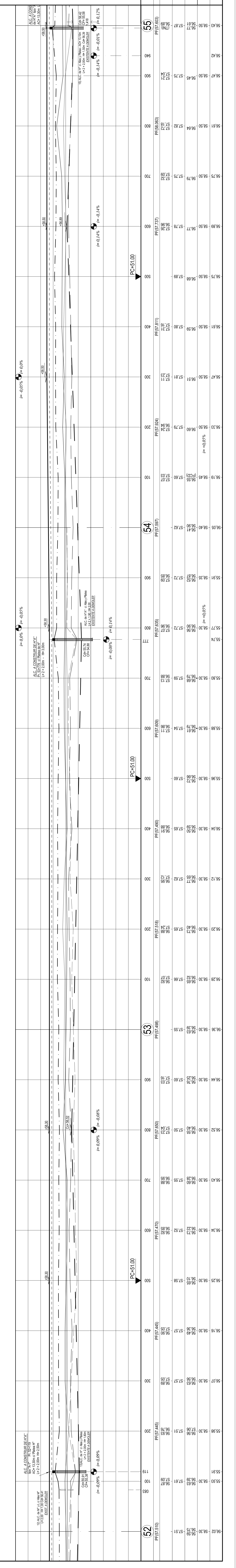
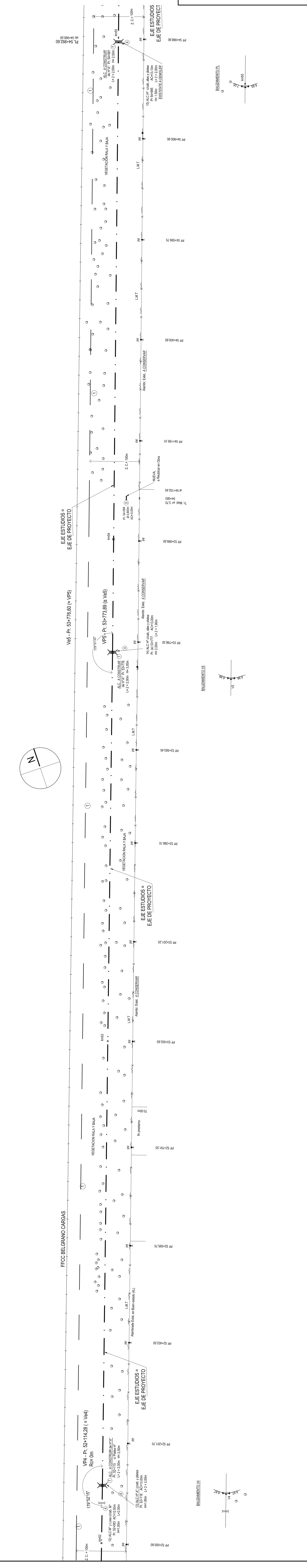
SECCION: GOLONDRINAS - LOS TABANOS

FECHA: DIRECTOR GRAL:
 SETIEMBRE/2013 - ACT. JUNIO 2016 Ing. OSVALDO CONTURSI

PROYECTISTA:
 Ing. J.D. CREMONA PARRA
 PROYECTISTA HERRERO
 Ing. CARLOS CIANI

REVISOR:
 Ing. J.D. CREMONA PARRA
 Ing. OSVALDO CONTURSI

PLANIALTIMETRIA KM (55)

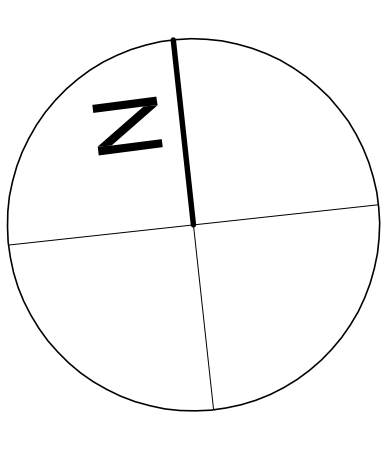


DATOS DE PROYECTO	
PROGRESIVAS	PC+20.00
COTAS DE PUNTO FLOJOS	52.00
COTAS DE TIERRNO NATURAL	52.00
COTAS DE OBRA BASICA	52.00
COTAS DE DESAGUE	52.00
COTAS DE PASANTE	52.00
COTAS DE DESAGUE	52.00

TIPOLOGIA ALTIMETRICA	
PROGRESIVAS	52
COTAS DE PUNTO FLOJOS	52.00
COTAS DE TIERRNO NATURAL	52.00
COTAS DE OBRA BASICA	52.00
COTAS DE DESAGUE	52.00
COTAS DE PASANTE	52.00
COTAS DE DESAGUE	52.00

FFCC BELGRANO CARGAS

a CAÑADA OMBU km58



PROVINCIA DE SANTA FE
DIRECCION PROVINCIAL DE VIALIDAD
 DIRECCION GENERAL DE PROYECTOS

DPV
 SANTA FE

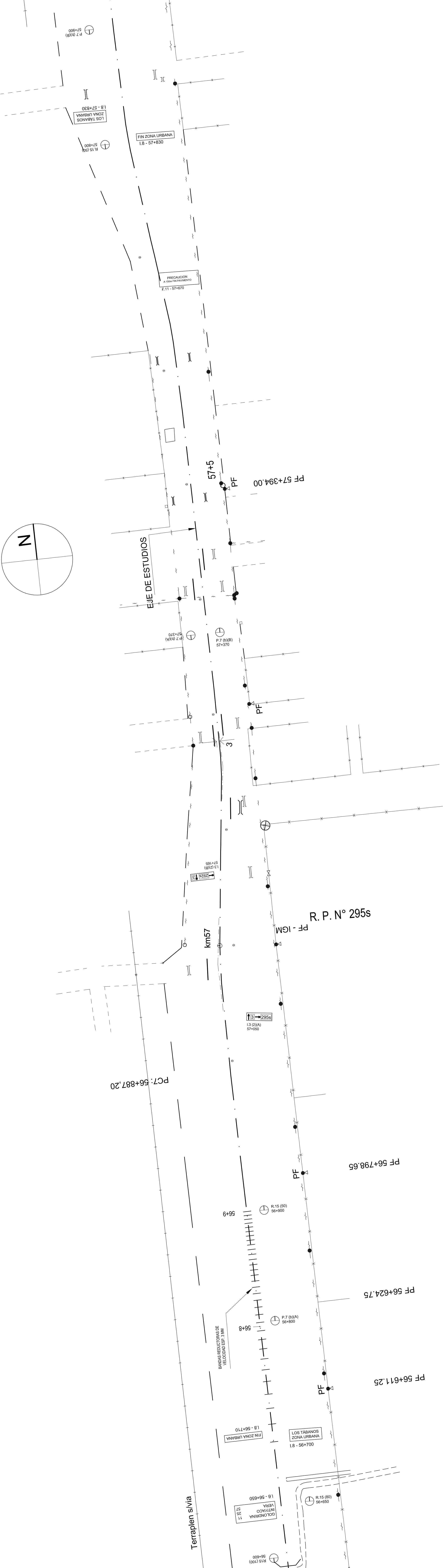
PROYECTO: 9842
 ESCALA: PLANIM 1:2500

PROYECTISTA:
 Ing. J.D. CREMONA PARRA
 Ing. CARLOS CUN

SECCION: GOLONDRINAS - LOS TABANOS

FECHA:
 DIRECTOR GRAL.: Ing. OSVALDO CONTURSI
 SETIEMBRE 2013 - ACT. JUNIO 2016

LOS TABANOS
SEÑALIZACIÓN



17
Cns: OMBU
LOS ANGRES 39
Límite Provincial 51
1.6 - 58+000

1.5 - 57+230
LOS TABANOS
ZONA URBANA

1.8 - 57+830
FIN ZONA URBANA

PRECAUCION
A 500 M DEL PAVIMENTO

57+5

PF 57+394.00

EJE DE ESTUDIOS

2.7 (2) (B) 57+370

PF

PF - IGM

R. P. N.º 2955

km57

2896
L3 (2)A
57+050

P.C.T.: 56+887,20

PF 56+798.65

PF 56+624.75

PF 56+611.25

BANDAS REDUCTORAS DE VELOCIDAD ESP. 3 MM

1.8 - 56+710
FIN ZONA URBANA

007-95 - 81
LOS TABANOS
ZONA URBANA

1.6 - 56+650
VERA
11
25
07
GOLONDRINA

56+800

