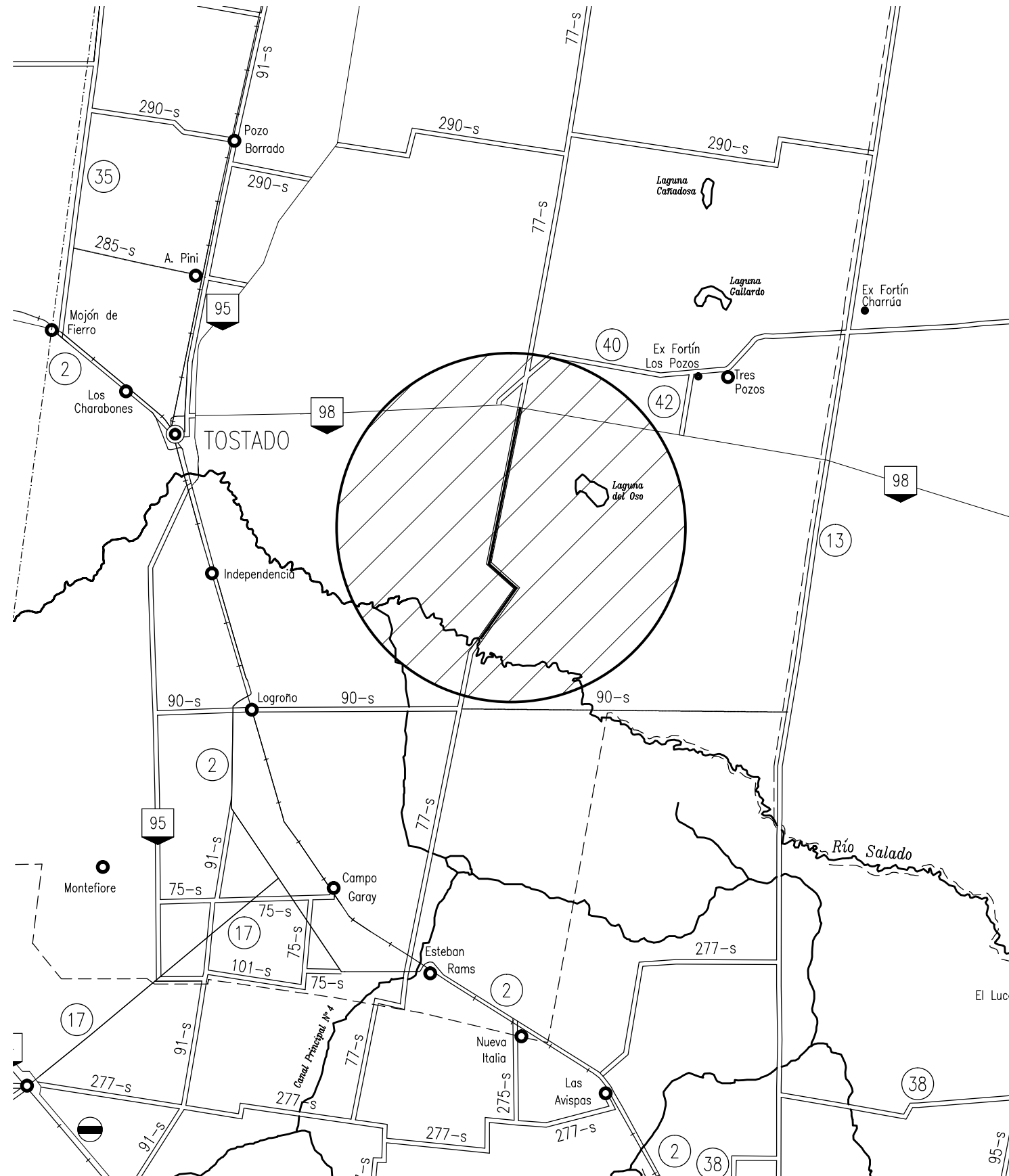
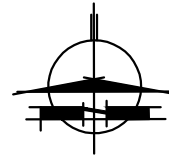


PROVINCIA DE SANTA FE

DEPARTAMENTO 9 DE JULIO



PROVINCIA DE SANTA FE
DIRECCION PROVINCIAL DE VIALIDAD
 DIRECCION DE ESTUDIOS Y PROYECTOS

PLANO N°
10306

ESCALA:
 PLANIM 1:2500
 ALTIM 1:100

PROYECTISTA:
 ING. CIVIL D. BATALLA
 ING. CIVIL F. BERTOIA

COLABORADOR:
 ING. REC. HIDR. J. FERNANDEZ

DIBUJANTE:
 TCN. A. CANTARUTTI

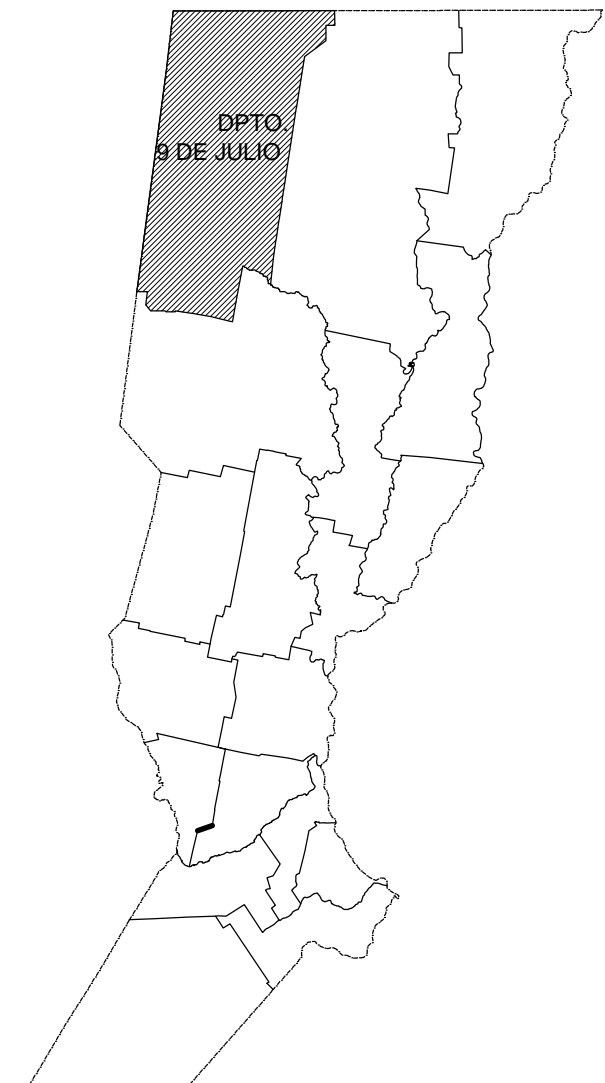
OBRA: RUTA PROVINCIAL N°77-s

TRAMO: RNN° 98 - Río Salado

FECHA:
 DICIEMBRE 2017

DIRECTOR:
 ING° O. CONTURSI

CROQUIS DE UBICACIÓN



REFERENCIAS

- RUTAS NACIONALES
- RUTAS PROVINCIALES
- LÍMITE INTERPROVINCIAL
- LÍMITE DEPARTAMENTAL



PROVINCIA DE SANTA FE
DIRECCION PROVINCIAL DE VIALIDAD
DIRECCION DE ESTUDIOS Y PROYECTOS

PLANO N°
10307
ESCALA:
PLANIM 1:2500
ALTIM 1:100

OBRA: RUTA PROVINCIAL N°77-s

TRAMO: RNN° 98 - Río Salado

PROYECTISTA:
ING. CIVIL D. BATALLA
ING. CIVIL F. BERTOIA

COLABORADOR:
ING. REC. HIDR. J. FERNANDEZ

FECHA:
DICIEMBRE 2017

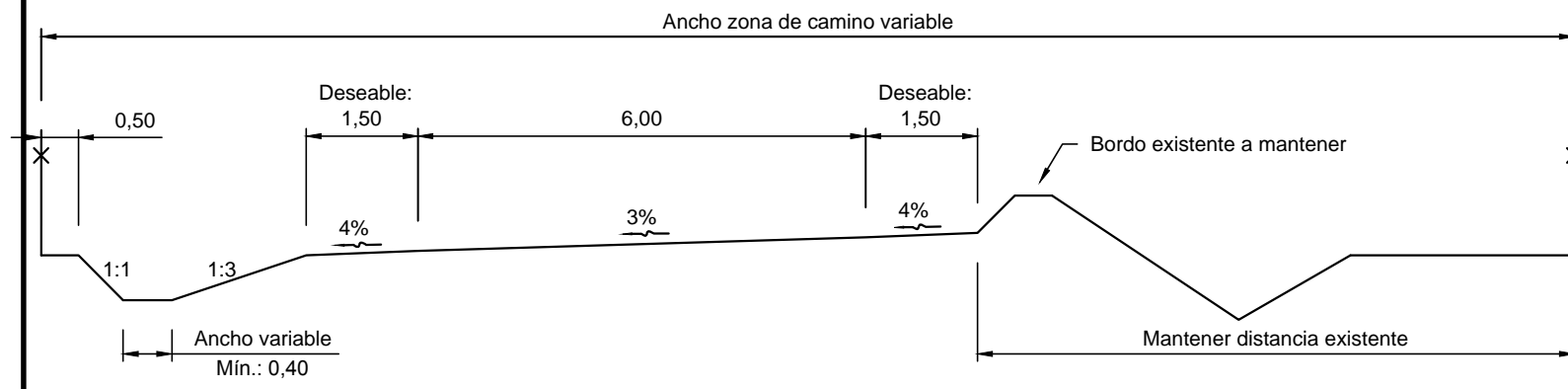
DIRECTOR:
ING° O. CONTURSI

DIBUJANTE:
TCN. A. CANTARUTTI

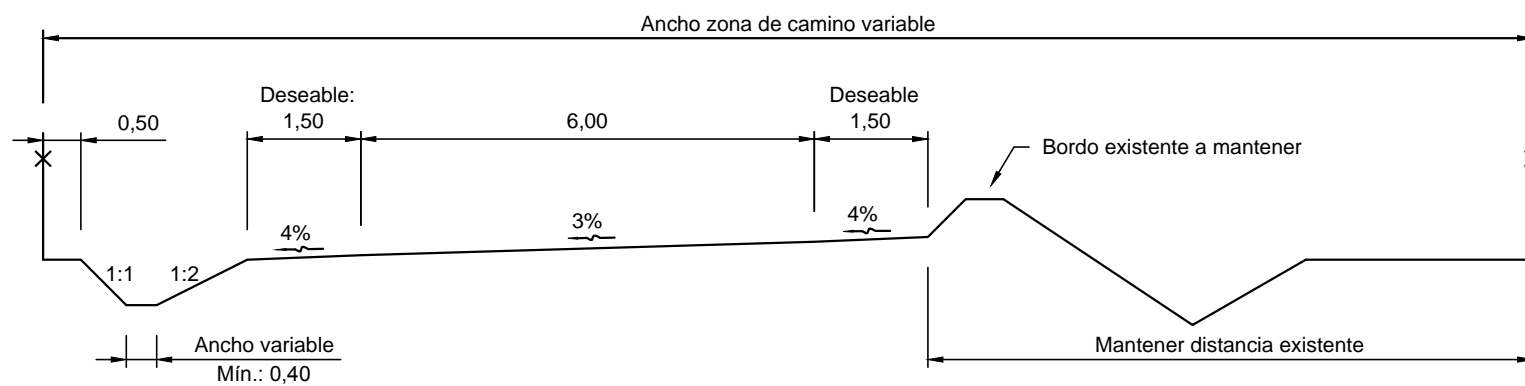
PLANIMETRÍA GENERAL



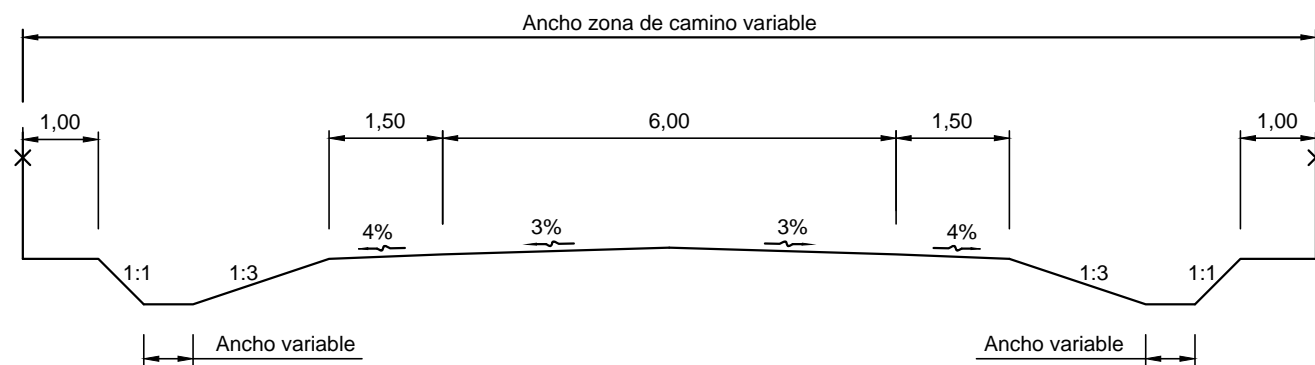
PERFILES 0+000 - 0+950 y 1+300 - 25+3000



PERFILES 0+950 - 1+300



PERFILES 25+300-29+270



PROVINCIA DE SANTA FE
DIRECCION PROVINCIAL DE VIALIDAD
 DIRECCION DE ESTUDIOS Y PROYECTOS

PLANO N°
10308

ESCALA:
1:100

OBRA: RUTA PROVINCIAL n°77-S

TRAMO: RUTA NACIONAL n°98 - RÍO SALADO

PROYECTISTA:
 ING. CIVIL D. BATALLA
 ING. CIVIL F. BERTOIA

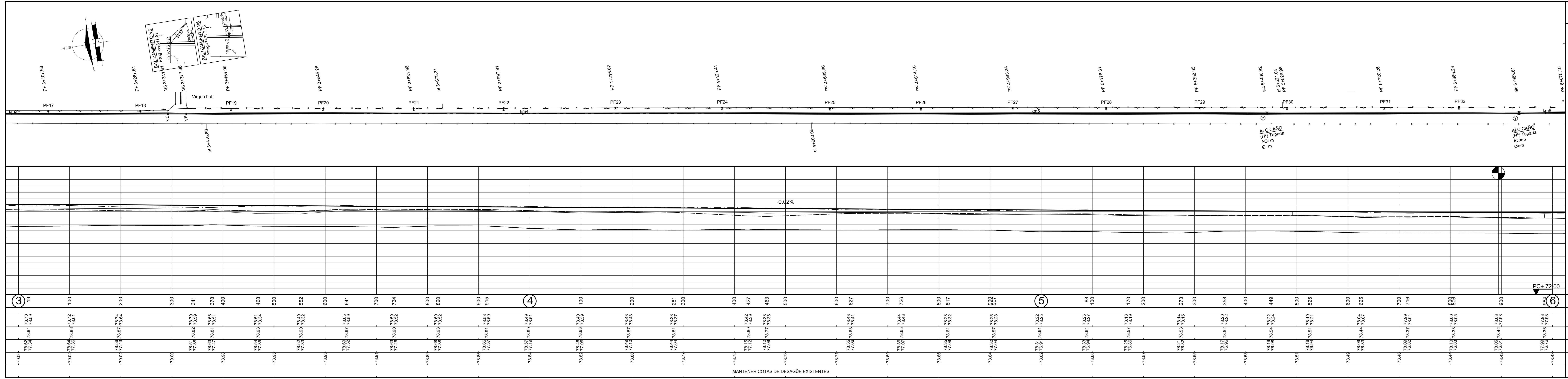
COLABORADOR:
 ING. REC. HIDR. C. CIAN

FECHA:
 DICIEMBRE 2017

DIRECTOR:
 ING° O. CONTURSI

DIBUJANTE:
 TÉCNICO N. ACOSTA
 M.M.O. D. MUGA

PERFILES TRANSVERSALES TIPO



PROVINCIA DE SANTA FE
DIRECCION PROVINCIAL DE VIALIDAD
DIRECCION DE ESTUDIOS Y PROYECTOS

OBRA: RUTA PROVINCIAL N°77-s

TRAMO: RNN° 98 - Río Salado

PROYECTISTA:
10309/1

ESCALA:
PLANIM 1:2500
ALTIM 1:100

PROYECTISTA:
ING. CIVIL D. BATALLA
ING. CIVIL F. BERTOIA

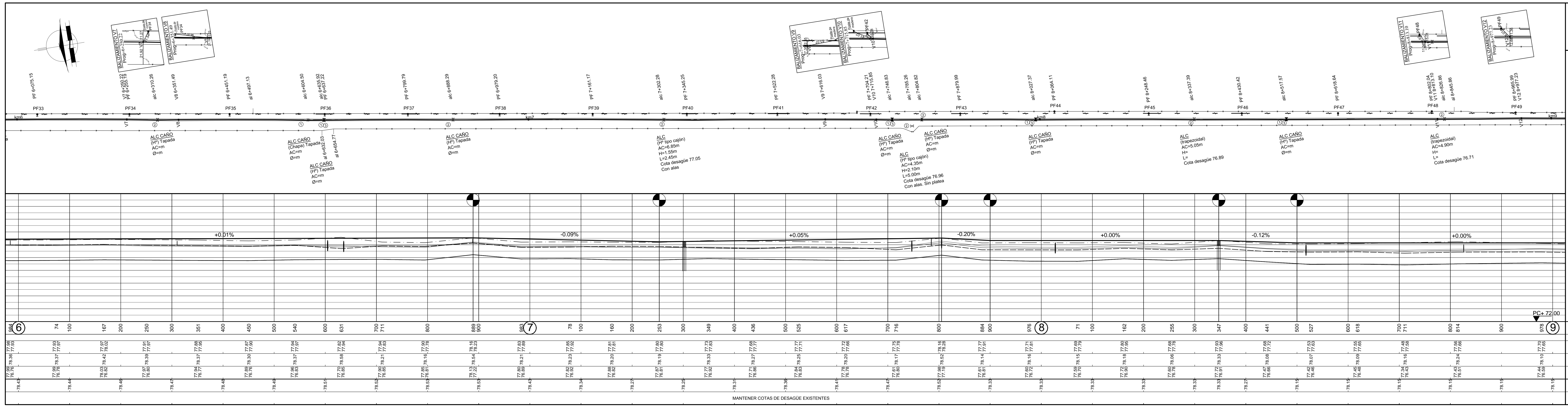
COLABORADOR:
ING. REC. HIDR. J. FERNANDEZ

DIBUJANTE:
TCN. A. CANTARUTTI

FECHA:
DICIEMBRE 2017

DIRECTOR:
ING° O. CONTURSI

PLANIALTIMETRIA KM ③ KM ⑥



OBRA: RUTA PROVINCIAL N° 77-s
TRAMO: RNN° 98 - Río Salado

FECHA: DICIEMBRE 2017 DIRECTOR: ING° O. CONTURSI

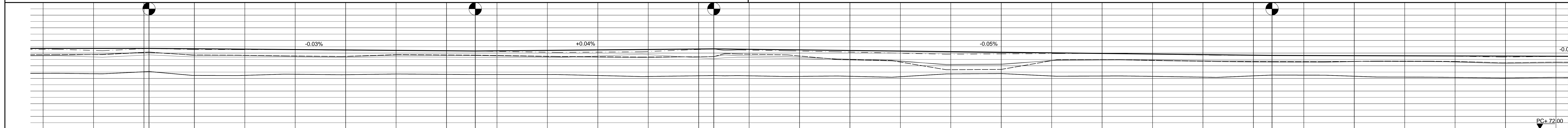
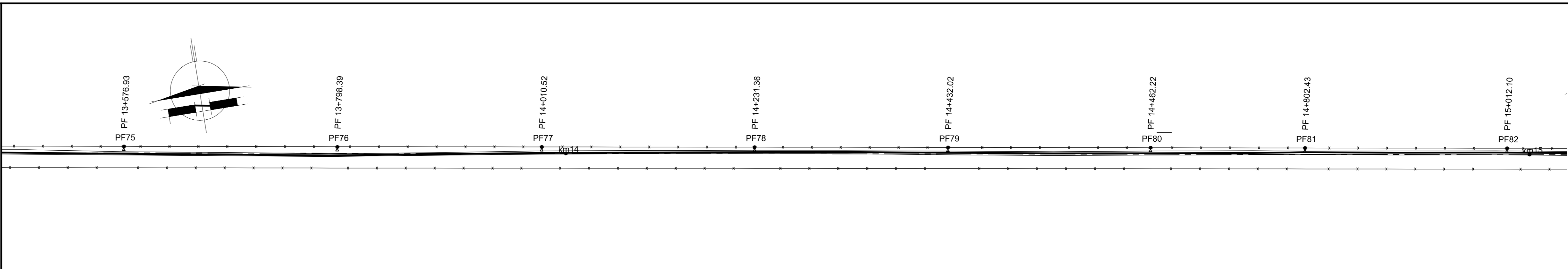
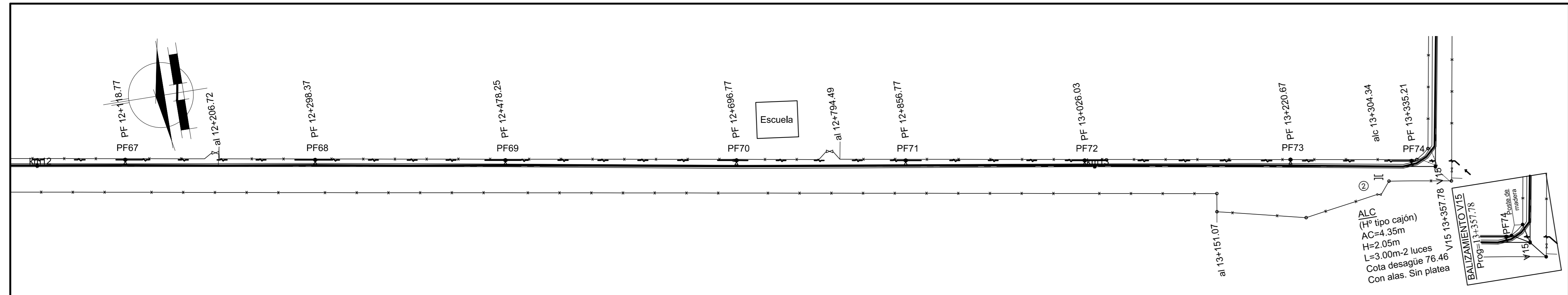
PLANO N° 10309/2
 ESCALA: PLANIM 1:2500, ALTIM 1:100
 PROYECTISTA: ING. CIVIL D. BATALLA, ING. CIVIL F. BERTOIA
 COLABORADOR: ING. REC. HIDR. J. FERNANDEZ
 DIBUJANTE: TCH. A. CANTARUTTI

PLANIALTIMETRIA KM ⑥ KM ⑨

	Punto fijo		Linea eléctrica
	Alcantarilla - Tranquera		Linea de alambrado
	Columna de HP - Poste de madera		Ferrocarril
	Farola - Poste c/Farola		Gasoducto - Est. de Gas
	Transformador		Molino - Tanque australiano

PROGRESIVAS	TIPOLOGIA ALTIMETRICA	DATOS DE ESTUDIO
COTAS DE PUNTOS FIJOS		
COTAS DE TERRENO NATURAL	IZQUIERDO DERECHO	
COTAS DE OBRA BASICA		
COTAS DE DESAGUE	IZQUIERDO DERECHO	
COTAS DE RASANTE		
COTAS DE DESAGUE		DATOS DE PROYECTO

MANTENER COTAS DE DESAGÜE EXISTENTES



Estación	Cotas de terreno natural	Cotas de obra básica	Cotas de rasante	Cotas de desague
12+00	77.88	77.88	77.88	77.88
12+100	77.83	77.83	77.83	77.83
12+200	77.83	77.83	77.83	77.83
12+300	77.83	77.83	77.83	77.83
12+400	77.83	77.83	77.83	77.83
12+500	77.83	77.83	77.83	77.83
12+600	77.83	77.83	77.83	77.83
12+700	77.83	77.83	77.83	77.83
12+800	77.83	77.83	77.83	77.83
12+900	77.83	77.83	77.83	77.83
13+000	77.83	77.83	77.83	77.83
13+100	77.83	77.83	77.83	77.83
13+200	77.83	77.83	77.83	77.83
13+300	77.83	77.83	77.83	77.83
13+400	77.83	77.83	77.83	77.83
13+500	77.83	77.83	77.83	77.83
14+000	77.83	77.83	77.83	77.83
14+100	77.83	77.83	77.83	77.83
14+200	77.83	77.83	77.83	77.83
14+300	77.83	77.83	77.83	77.83
14+400	77.83	77.83	77.83	77.83
14+500	77.83	77.83	77.83	77.83
14+600	77.83	77.83	77.83	77.83
14+700	77.83	77.83	77.83	77.83
14+800	77.83	77.83	77.83	77.83
14+900	77.83	77.83	77.83	77.83
15+000	77.83	77.83	77.83	77.83

MANTENER COTAS DE DESAGÜE EXISTENTES

OBRA: RUTA PROVINCIAL N°77-s
TRAMO: RNN° 98 - Río Salado

PLANO N° 10309/4
 ESCALA: PLANIM 1:2500
 ALTIM 1:100

PROYECTISTA: ING. CIVIL D. BATALLA
 COLABORADOR: ING. CIVIL F. BERTOJA
 COLABORADOR: ING. REC. HIDR. J. FERNANDEZ
 DIBUJANTE: TCN. A. CANTARUTTI

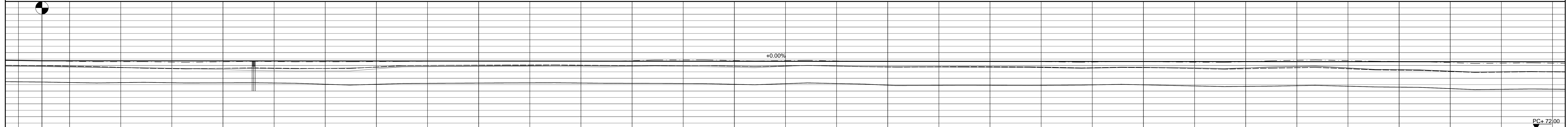
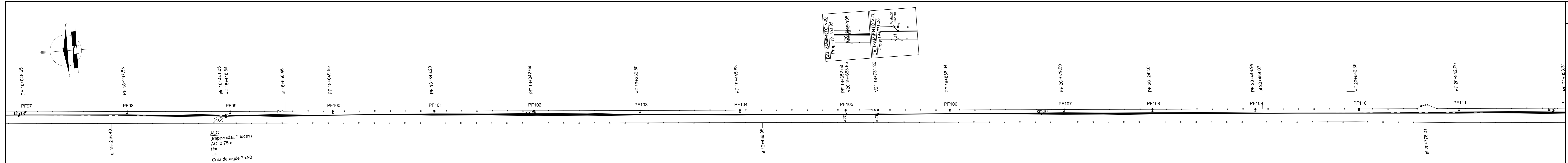
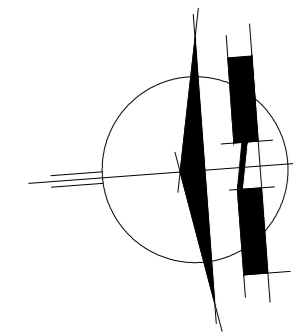
FECHA: DICIEMBRE 2017
 DIRECTOR: ING° O. CONTURSI

PLANIALTIMETRIA KM 12 KM 15

SIMBOLOGIA PLANIMETRICA			
+	Punto fijo	~	Línea eléctrica
II	Alcantarilla - Tranquera	—+—+—+—	Línea de alambrado
o	Columna de H° - Poste de madera	—+—+—+—	Ferrocarril
o	Farola - Poste c/Farola	—+—+—+—	Gasoducto - Est. de Gas
o	Transformador	o	Molino - Tanque australiano

PROGRESIVAS	TIPOLOGIA ALTIMETRICA
COTAS DE PUNTOS FIJOS	
COTAS DE TERRENO NATURAL	—————
COTAS DE OBRA BASICA	- - - - -
COTAS DE DESAGUE	—————
COTAS DE RASANTE	—————
COTAS DE DESAGUE	—————

DATOS DE ESTUDIO PROYECTO



PROGRESIVAS	TIPOLOGIA ALTIMETRICA	DATOS DE ESTUDIO				
COTAS DE PUNTOS FIJOS			DATOS DE ESTUDIO			
COTAS DE TERRENO NATURAL	{ IZQUIERDO DERECHO			DATOS DE ESTUDIO		
COTAS DE OBRA BASICA	{ IZQUIERDO DERECHO				DATOS DE ESTUDIO	
COTAS DE DESAGUE	{ IZQUIERDO DERECHO					DATOS DE ESTUDIO
COTAS DE RASANTE						
COTAS DE DESAGUE		DATOS DE ESTUDIO				

MANTENER COTAS DE DESAGÜE EXISTENTES

PROVINCIA DE SANTA FE
DIRECCION PROVINCIAL DE VIALIDAD
 DIRECCION DE ESTUDIOS Y PROYECTOS

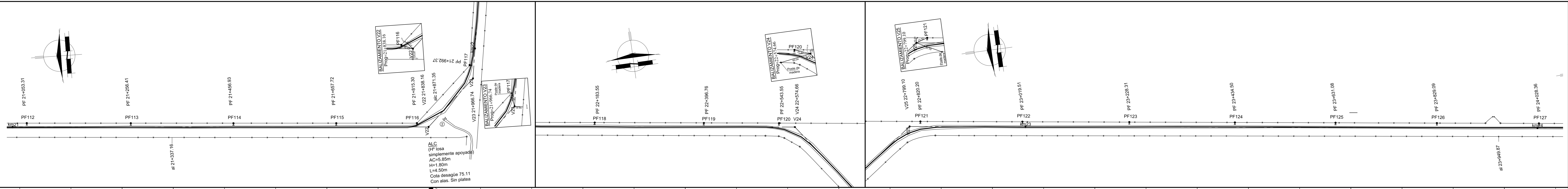
OBRA: RUTA PROVINCIAL N°77-s
TRAMO: RNN° 98 - Río Salado

PLANO N° 10309/6
 ESCALA: PLANIM 1:2500, ALTIM 1:100
 PROYECTISTA: ING. CIVIL D. BATALLA, ING. CIVIL F. BERTOIA
 COLABORADOR: ING. REC. HIDR. J. FERNANDEZ
 DIRECTOR: ING° O. CONTURSI
 DIBUJANTE: TON. A. CANTARUTTI

PLANIALTIMETRIA KM 18 KM 21

SIMBOLOGIA PLANIMETRICA

●	Punto fijo	—	Línea eléctrica
	Alcantarilla - Tranquera	—+—	Línea de alambrado
○	Columna de H° - Poste de madera	—+—+—	Ferrocarril
⊗	Farola - Poste c/Farola	—+—+—+—	Gasoducto - Est. de Gas
□	Transformador	—+—+—+—+—	Molino - Tanque australiano



Estación	Cota de Puntos Fijos	Cota de Terreno Natural	Cota de Obra Básica	Cota de Desagüe	Cota de Rasante	Cota de Desagüe
21+000	76.48, 77.13, 76.52	76.48, 77.13, 76.52	76.48, 77.13, 76.52	76.48, 77.13, 76.52	77.28	76.48, 77.13, 76.52
21+100	76.54, 77.20, 76.53, 76.59	76.54, 77.20, 76.53, 76.59	76.54, 77.20, 76.53, 76.59	76.54, 77.20, 76.53, 76.59	77.28	76.54, 77.20, 76.53, 76.59
21+200	76.59, 77.22, 76.57, 76.57	76.59, 77.22, 76.57, 76.57	76.59, 77.22, 76.57, 76.57	76.59, 77.22, 76.57, 76.57	77.28	76.59, 77.22, 76.57, 76.57
21+300	76.64, 77.26, 76.61, 76.62	76.64, 77.26, 76.61, 76.62	76.64, 77.26, 76.61, 76.62	76.64, 77.26, 76.61, 76.62	77.28	76.64, 77.26, 76.61, 76.62
21+400	76.67, 77.30, 76.64, 76.66	76.67, 77.30, 76.64, 76.66	76.67, 77.30, 76.64, 76.66	76.67, 77.30, 76.64, 76.66	77.27	76.67, 77.30, 76.64, 76.66
21+500	76.69, 77.33, 76.66, 76.68	76.69, 77.33, 76.66, 76.68	76.69, 77.33, 76.66, 76.68	76.69, 77.33, 76.66, 76.68	77.27	76.69, 77.33, 76.66, 76.68
21+600	76.71, 77.36, 76.68, 76.70	76.71, 77.36, 76.68, 76.70	76.71, 77.36, 76.68, 76.70	76.71, 77.36, 76.68, 76.70	77.27	76.71, 77.36, 76.68, 76.70
21+700	76.73, 77.39, 76.70, 76.72	76.73, 77.39, 76.70, 76.72	76.73, 77.39, 76.70, 76.72	76.73, 77.39, 76.70, 76.72	77.27	76.73, 77.39, 76.70, 76.72
21+800	76.75, 77.42, 76.72, 76.74	76.75, 77.42, 76.72, 76.74	76.75, 77.42, 76.72, 76.74	76.75, 77.42, 76.72, 76.74	77.27	76.75, 77.42, 76.72, 76.74
21+900	76.77, 77.45, 76.74, 76.76	76.77, 77.45, 76.74, 76.76	76.77, 77.45, 76.74, 76.76	76.77, 77.45, 76.74, 76.76	77.27	76.77, 77.45, 76.74, 76.76
22+000	76.79, 77.48, 76.76, 76.78	76.79, 77.48, 76.76, 76.78	76.79, 77.48, 76.76, 76.78	76.79, 77.48, 76.76, 76.78	77.27	76.79, 77.48, 76.76, 76.78
22+100	76.81, 77.51, 76.78, 76.80	76.81, 77.51, 76.78, 76.80	76.81, 77.51, 76.78, 76.80	76.81, 77.51, 76.78, 76.80	77.27	76.81, 77.51, 76.78, 76.80
22+200	76.83, 77.54, 76.80, 76.82	76.83, 77.54, 76.80, 76.82	76.83, 77.54, 76.80, 76.82	76.83, 77.54, 76.80, 76.82	77.27	76.83, 77.54, 76.80, 76.82
22+300	76.85, 77.57, 76.82, 76.84	76.85, 77.57, 76.82, 76.84	76.85, 77.57, 76.82, 76.84	76.85, 77.57, 76.82, 76.84	77.27	76.85, 77.57, 76.82, 76.84
22+400	76.87, 77.60, 76.84, 76.86	76.87, 77.60, 76.84, 76.86	76.87, 77.60, 76.84, 76.86	76.87, 77.60, 76.84, 76.86	77.27	76.87, 77.60, 76.84, 76.86
22+500	76.89, 77.63, 76.86, 76.88	76.89, 77.63, 76.86, 76.88	76.89, 77.63, 76.86, 76.88	76.89, 77.63, 76.86, 76.88	77.27	76.89, 77.63, 76.86, 76.88
22+600	76.91, 77.66, 76.88, 76.90	76.91, 77.66, 76.88, 76.90	76.91, 77.66, 76.88, 76.90	76.91, 77.66, 76.88, 76.90	77.27	76.91, 77.66, 76.88, 76.90
22+700	76.93, 77.69, 76.90, 76.92	76.93, 77.69, 76.90, 76.92	76.93, 77.69, 76.90, 76.92	76.93, 77.69, 76.90, 76.92	77.27	76.93, 77.69, 76.90, 76.92
22+800	76.95, 77.72, 76.92, 76.94	76.95, 77.72, 76.92, 76.94	76.95, 77.72, 76.92, 76.94	76.95, 77.72, 76.92, 76.94	77.27	76.95, 77.72, 76.92, 76.94
22+900	76.97, 77.75, 76.94, 76.96	76.97, 77.75, 76.94, 76.96	76.97, 77.75, 76.94, 76.96	76.97, 77.75, 76.94, 76.96	77.27	76.97, 77.75, 76.94, 76.96
23+000	76.99, 77.78, 76.96, 76.98	76.99, 77.78, 76.96, 76.98	76.99, 77.78, 76.96, 76.98	76.99, 77.78, 76.96, 76.98	77.27	76.99, 77.78, 76.96, 76.98
23+100	77.01, 77.81, 76.98, 77.00	77.01, 77.81, 76.98, 77.00	77.01, 77.81, 76.98, 77.00	77.01, 77.81, 76.98, 77.00	77.27	77.01, 77.81, 76.98, 77.00
23+200	77.03, 77.84, 77.00, 77.02	77.03, 77.84, 77.00, 77.02	77.03, 77.84, 77.00, 77.02	77.03, 77.84, 77.00, 77.02	77.27	77.03, 77.84, 77.00, 77.02
23+300	77.05, 77.87, 77.02, 77.04	77.05, 77.87, 77.02, 77.04	77.05, 77.87, 77.02, 77.04	77.05, 77.87, 77.02, 77.04	77.27	77.05, 77.87, 77.02, 77.04
23+400	77.07, 77.90, 77.04, 77.06	77.07, 77.90, 77.04, 77.06	77.07, 77.90, 77.04, 77.06	77.07, 77.90, 77.04, 77.06	77.27	77.07, 77.90, 77.04, 77.06
23+500	77.09, 77.93, 77.06, 77.08	77.09, 77.93, 77.06, 77.08	77.09, 77.93, 77.06, 77.08	77.09, 77.93, 77.06, 77.08	77.27	77.09, 77.93, 77.06, 77.08
23+600	77.11, 77.96, 77.08, 77.10	77.11, 77.96, 77.08, 77.10	77.11, 77.96, 77.08, 77.10	77.11, 77.96, 77.08, 77.10	77.27	77.11, 77.96, 77.08, 77.10
23+700	77.13, 77.99, 77.10, 77.12	77.13, 77.99, 77.10, 77.12	77.13, 77.99, 77.10, 77.12	77.13, 77.99, 77.10, 77.12	77.27	77.13, 77.99, 77.10, 77.12
23+800	77.15, 78.02, 77.12, 77.14	77.15, 78.02, 77.12, 77.14	77.15, 78.02, 77.12, 77.14	77.15, 78.02, 77.12, 77.14	77.27	77.15, 78.02, 77.12, 77.14
23+900	77.17, 78.05, 77.14, 77.16	77.17, 78.05, 77.14, 77.16	77.17, 78.05, 77.14, 77.16	77.17, 78.05, 77.14, 77.16	77.27	77.17, 78.05, 77.14, 77.16
24+000	77.19, 78.08, 77.16, 77.18	77.19, 78.08, 77.16, 77.18	77.19, 78.08, 77.16, 77.18	77.19, 78.08, 77.16, 77.18	77.27	77.19, 78.08, 77.16, 77.18

MANTENER COTAS DE DESAGÜE EXISTENTES

PROVINCIA DE SANTA FE
DIRECCION PROVINCIAL DE VIALIDAD
 DIRECCION DE ESTUDIOS Y PROYECTOS

OBRA: RUTA PROVINCIAL N°77-s
TRAMO: RNN° 98 - Río Salado

FECHA: DICIEMBRE 2017
 DIRECTOR: ING° O. CONTURSI

PLANO N° 10309/7
 ESCALA: PLANIM 1:2500
 ALTIM 1:100

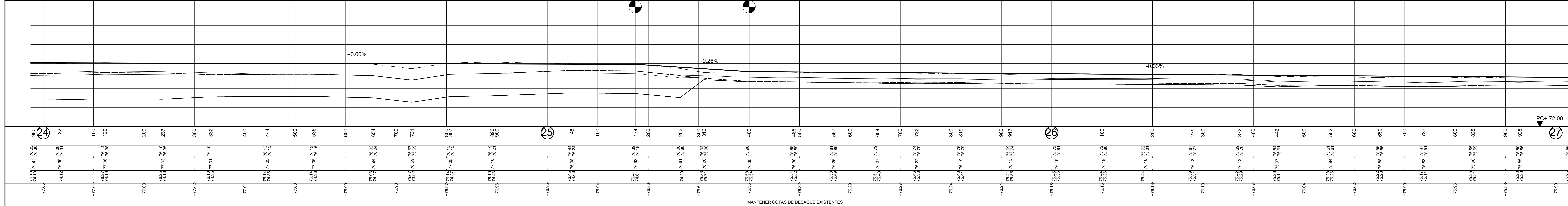
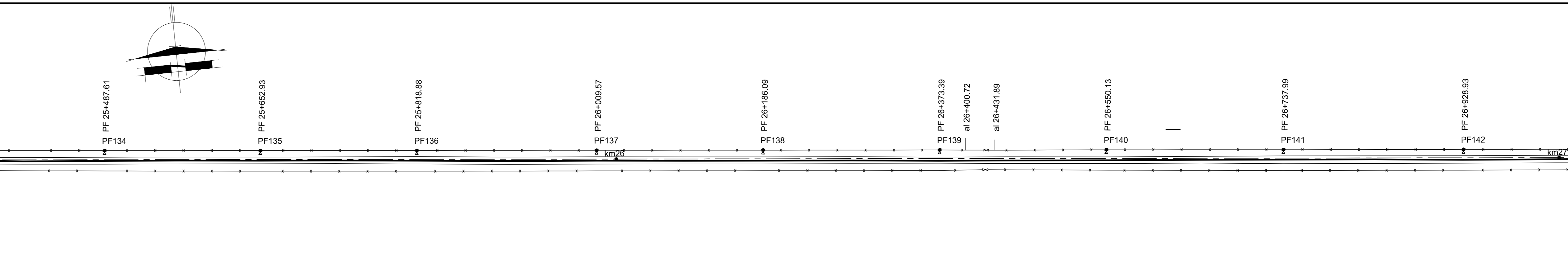
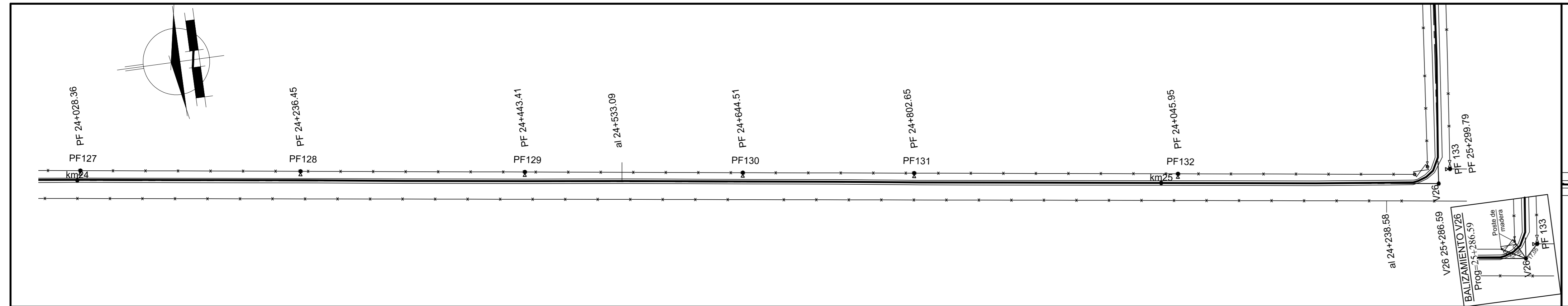
PROYECTISTA: ING. CIVIL D. BATALLA
 ING. CIVIL F. BERTOLA
 COLABORADOR: ING. REC. HIDR. J. FERNANDEZ
 DIBUJANTE: TCN. A. CANTARUTTI

PLANIALTIMETRIA KM 21 KM 24

SIMBOLOGIA PLANIMETRICA

●	Punto fijo	—	Línea eléctrica
—	Alcantarilla - Tranquera	—+—	Línea de alambrado
●	Columna de HP - Poste de madera	—+—	Ferrocarril
⊠	Farola - Poste c/Farola	—+—	Gasoducto - Est. de Gas
□	Transformador	—+—	Molino - Tanque australiano

PROGRESIVAS	TIPOLOGIA ALTIMETRICA	DATOS DE ESTUDIO
COTAS DE PUNTOS FIJOS		
COTAS DE TERRENO NATURAL	IZQUIERDO DERECHO	
COTAS DE OBRA BASICA		
COTAS DE DESAGUE	IZQUIERDO DERECHO	
COTAS DE RASANTE		
COTAS DE DESAGUE		



980	32	100	122	200	237	300	332	400	444	500	536	600	654	700	731	800	807	880	900	25	48	100	174	200	263	300	310	400	488	500	567	600	654	700	732	800	819	900	917	26	100	200	279	300	372	400	446	500	552	600	650	700	737	800	835	900	928	27	980																																																																																																																																																																																																																																																																																																																																																																																																																																																																																																																																																																																																																																																																																																																																																																																																																																																																																																																																																																																																																																																																																																																																																																																																																																																																																																																																																																																																																													
76.05		77.04		77.03		77.02		77.01		77.00		76.99		76.98		76.97		76.96		76.95		76.94		76.86		76.61		76.35		76.32		76.23		76.27		76.21		76.18		76.16		76.13		76.10		76.07		76.04		76.02		75.98		75.93		75.90		75.85																																																																																																																																																																																																																																																																																																																																																																																																																																																																																																																																																																																																																																																																																																																																																																																																																																																																																																																																																																																																																																																																																																																																																																																																																																																																																																																																																																																																																														
76.14		74.12		76.25		76.10		76.14		76.10		76.14		76.09		76.14		76.14		76.19		76.45		76.41		76.59		76.59		76.54		76.50		76.51		76.46		76.41		76.44		76.42		76.39		76.31		76.42		76.26		76.22		76.17		76.25		76.20		76.14		76.11		76.05		75.99		75.93		75.87																																																																																																																																																																																																																																																																																																																																																																																																																																																																																																																																																																																																																																																																																																																																																																																																																																																																																																																																																																																																																																																																																																																																																																																																																																																																																																																																																																																																																		
76.05		76.97		76.99		77.01		77.03		77.05		77.07		77.09		77.11		77.13		77.15		77.17		77.19		77.21		77.23		77.25		77.27		77.29		77.31		77.33		77.35		77.37		77.39		77.41		77.43		77.45		77.47		77.49		77.51		77.53		77.55		77.57		77.59		77.61		77.63		77.65		77.67																																																																																																																																																																																																																																																																																																																																																																																																																																																																																																																																																																																																																																																																																																																																																																																																																																																																																																																																																																																																																																																																																																																																																																																																																																																																																																																																																																																																																
76.30		76.06		76.31		76.14		76.38		76.10		76.16		76.02		76.13		76.04		76.19		76.44		76.39		76.06		76.35		76.30		76.26		76.27		76.22		76.18		76.18		76.12		76.13		76.12		76.09		76.08		76.07		76.06		76.05		76.04		76.03		76.02		76.01		76.00		75.99		75.98		75.97		75.96		75.95		75.94		75.93		75.92		75.91		75.90		75.89		75.88		75.87		75.86		75.85		75.84		75.83		75.82		75.81		75.80		75.79		75.78		75.77		75.76		75.75		75.74		75.73		75.72		75.71		75.70		75.69		75.68		75.67		75.66		75.65		75.64		75.63		75.62		75.61		75.60		75.59		75.58		75.57		75.56		75.55		75.54		75.53		75.52		75.51		75.50		75.49		75.48		75.47		75.46		75.45		75.44		75.43		75.42		75.41		75.40		75.39		75.38		75.37		75.36		75.35		75.34		75.33		75.32		75.31		75.30		75.29		75.28		75.27		75.26		75.25		75.24		75.23		75.22		75.21		75.20		75.19		75.18		75.17		75.16		75.15		75.14		75.13		75.12		75.11		75.10		75.09		75.08		75.07		75.06		75.05		75.04		75.03		75.02		75.01		75.00		74.99		74.98		74.97		74.96		74.95		74.94		74.93		74.92		74.91		74.90		74.89		74.88		74.87		74.86		74.85		74.84		74.83		74.82		74.81		74.80		74.79		74.78		74.77		74.76		74.75		74.74		74.73		74.72		74.71		74.70		74.69		74.68		74.67		74.66		74.65		74.64		74.63		74.62		74.61		74.60		74.59		74.58		74.57		74.56		74.55		74.54		74.53		74.52		74.51		74.50		74.49		74.48		74.47		74.46		74.45		74.44		74.43		74.42		74.41		74.40		74.39		74.38		74.37		74.36		74.35		74.34		74.33		74.32		74.31		74.30		74.29		74.28		74.27		74.26		74.25		74.24		74.23		74.22		74.21		74.20		74.19		74.18		74.17		74.16		74.15		74.14		74.13		74.12		74.11		74.10		74.09		74.08		74.07		74.06		74.05		74.04		74.03		74.02		74.01		74.00		73.99		73.98		73.97		73.96		73.95		73.94		73.93		73.92		73.91		73.90		73.89		73.88		73.87		73.86		73.85		73.84		73.83		73.82		73.81		73.80		73.79		73.78		73.77		73.76		73.75		73.74		73.73		73.72		73.71		73.70		73.69		73.68		73.67		73.66		73.65		73.64		73.63		73.62		73.61		73.60		73.59		73.58		73.57		73.56		73.55		73.54		73.53		73.52		73.51		73.50		73.49		73.48		73.47		73.46		73.45		73.44		73.43		73.42		73.41		73.40		73.39		73.38		73.37		73.36		73.35		73.34		73.33		73.32		73.31		73.30		73.29		73.28		73.27		73.26		73.25		73.24		73.23		73.22		73.21		73.20		73.19		73.18		73.17		73.16		73.15		73.14		73.13		73.12		73.11		73.10		73.09		73.08		73.07		73.06		73.05		73.04		73.03		73.02		73.01		73.00		72.99		72.98		72.97		72.96		72.95		72.94		72.93		72.92		72.91		72.90		72.89		72.88		72.87		72.86		72.85		72.84		72.83		72.82		72.81		72.80		72.79		72.78		72.77		72.76		72.75		72.74		72.73		72.72		72.71		72.70		72.69		72.68		72.67		72.66		72.65		72.64		72.63		72.62		72.61		72.60		72.59		72.58		72.57		72.56		72.55		72.54		72.53		72.52		72.51		72.50		72.49		72.48		72.47		72.46		72.45		72.44		72.43		72.42		72.41		72.40		72.39		72.38		72.37		72.36		72.35		72.34		72.33		72.32		72.31		72.30		72.29		72.28		72.27		72.26		72.25		72.24		72.23		72.22		72.21		72.20		72.19		72.18		72.17		72.16		72.15		72.14		72.13		72.12		72.11		72.10		72.09		72.08		72.07		72.06		72.05		72.04		72.03		72.02		72.01		72.00		71.99		71.98		71.97		71.96		71.95		71.94		71.93		71.92		71.91		71.90		71.89		71.88		71.87		71.86		71.85		71.84		71.83		71.82		71.81		71.80		71.79		71.78		71.77		71.76		71.75		71.74		71.73		71.72		71.71		71.70		71.69		71.68		71.67		71.66		71.65		71.64		71.63		71.62		71.61		71.60		71.59		71.58		71.57		71.56		71.55		71.54		71.53		71.52		71.51		71.50		71.49		71.48		71.47		71.46		71.45		71.44		71.43		71.42		71.41		71.40		71.39		71.38		71.37		71.36		71.35		71.34		71.33		71.32		71.31		71.30		71.29		71.28		71.27		71.26		71.25		71.24		71.23		71.22		71.21		71.20		71.19		71.18		71.17		71.16		71.15		71.14		71.13		71.12		71.11		71.10		71.09		71.08		71.07		71.06		71.05		71.04		71.03		71.02		71.01		71.00		70.99		70.98		70.97		70.96		70.95		70.94		70.93		70.92		70.91		70.90		70.89		70.88		70.87		70.86		70.85		70.84		70.83		70.82		70.81		70.80		70.79		70.78		70.77		70.76		70.75		70.74		70.73		70.72		70.71		70.70		70.69		70.68		70.67		70.66		70.65		70.64		70.63		70.62		70.61		70.60		70.59		70.58		70.57		70.56		70.55		70.54		70.53		70.52		70.51		70.50		70.49		70.48		70.47		70.46		70.45		70.44		70.43		70.42		70.41		70.40		70.39		70.38		70.37		70.36		70.35		70.34		70.33		70.32		70.31		70.30		70.29		70.28		70.27		70.26		70.25		70.24		70.23		70.22		70.21		70.20		70.19		70.18		70.17		70.16		70.15		70.14		70.13		70.12		70.11		70.10		70.09		70.08		70.07		70.06		70.05		70.04		70.03		70.02		70.01		70.00		69.99		69.98		69.97		69.96		69.95		69.94		69.93		69.92		69.91		69.90		69.89		69.88		69.87		69.86		69.85		69.84		69.83		69.82		69.81		69.80		69.79		69.78		69.77		69.76		69.75		69.74		69.73		69.72		69.71		69.70		69.69		69.68		69.67		69.66		69.65		69.64		69.63		69.62		69.61		69.60		69.59		69.58		69.57		69.56		69.55		69.54		69.53		69.52		69.51		69.50		69.49		69.48		69.47		69.46		69.45		69.44		69.43		69.42		69.41		69.40		69.39		69.38		69.37		69.36		69.35		69.34		69.33		69.32		69.31		69.30		69.29		69.28		69.27		69.26		69.25		69.24		69.23		69.22		69.21		69.20		69.19		69.18		69.17

